

DOUBLE-SIDED ADJUSTABLE STRAP

Using **cork or faux leather** on one side, and fabric on the other side.

Please note: Fabric is narrower than cork/faux leather, so you can see a little of the cork/faux leather on the fabric side, as a little detail



**Finished strap would be
1 1/2" wide x 59" long
(4 cm) wide x (150 cm) long**



**HARDWARE
INNER WIDTH = 1 1/2" (4 cm)**

**1 SLIDER
2 SWIVEL CLAPS HOOKS**

© Sewn Ideas - You are welcome to sell finished items made by you.
Patterns may not be copied, redistributed or resold.

TO MAKE SEWING EASIER IN FAUX LEATHER



You will need a Teflon foot or a walking foot.

Another option is to cover the bottom of your normal sewing foot with Scotch tape, cutting out the tape where the needle goes in.

This should create a non-stick surface, and prevent the foot from sticking to the faux leather.

Sometimes it helps to use a longer stitch length when topstitching faux leather. I use between 4.0 mm and 4.5 mm, stitch length when topstitching faux leather.

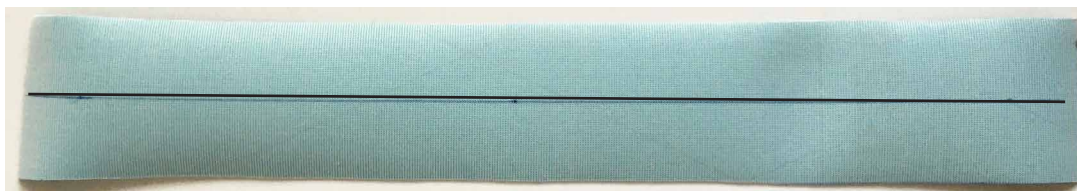
Make a test on a scrap of faux leather.

SEWING INSTRUCTION

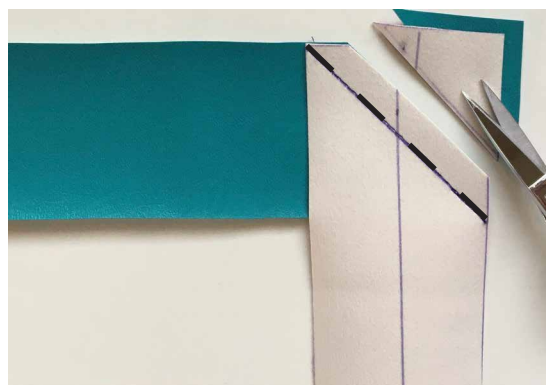
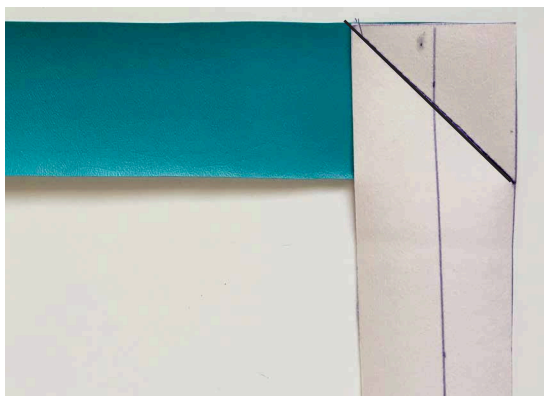
DOUBLE-SIDED ADJUSTABLE STRAP Making one continuous strap
Finished strap would be about 59" (150 cm) long before hardware is attached
Finished strap can extend from 27" to 50" (69 cm to 127 cm)

Cut **fabric** 2 1/4" (6 cm) wide x 59 3/4" (152 cm) long, parallel to the grain.
The grain is the edge of your fabric, where the fabric manufacturer has their name stamped.

Cut **faux leather/cork** 3" (8 cm) wide x 59" (150 cm) long.
If you fabric/faux leather is not long enough, sew pieces together as shown below.



Start by marking a horizontal line through the center of the fabric strap(s), onto wrong side of fabric.
Repeat this with the faux leather/cork.



1. Lay one end of the straps on the table, right side facing up. Now lay the other strap end on top, crosswise, right side facing down. Draw a diagonal line from one corner to the other corner. Sew together on this line.
2. Leave 1/2" (1,5 cm) seam allowance and cut off excess fabric, faux leather/cork.

Fabric: Press seam allowance open.

Faux leather/cork: Finger press the seam allowance open.

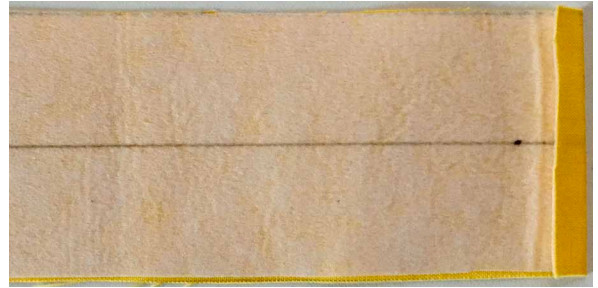
© Sewn Ideas - You are welcome to sell finished items made by you.
Patterns may not be copied, redistributed or resold.

SEWING INSTRUCTION



3. **Faux leather/cork only:**

Topstitch each side of seam allowance, using 1/4 (7 mm) seam allowance.



4. **Fabric only:**

Fold each short edges 3/8" (1 cm) to wrong side. Press. Fabric strap should now be 59" (150 cm) long.

5. **Fabric only:** Fold each long edges towards the drawn horizontal center line. Press.

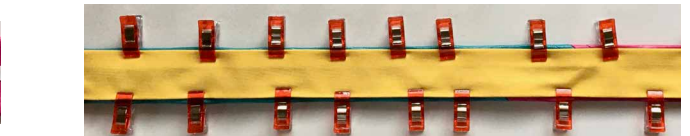


FAUX LEATHER/CORK STRAP



1. Place a strip of double-sided tape 1/8" (3 mm) from each side of the drawn horizontal center line, of the faux leather/cork.

2. Remove paper backing from tape and fold each long edges towards the horizontal center line. Finger press.



3. Now place another strip of double-sided tape, onto the open seam.

4. Remove paper backing from tape, and place the fabric strap made earlier centered, on top of the tape, with right side facing up.

You can use clover Wonder clips to hold the layers in place.



5. Topstitch around all edges using 1/8" (3 mm) seam allowance of the **fabric** strap. If your faux leather/cork is a little longer than your fabric strap, cut off excess faux leather/cork

© Sewn Ideas - You are welcome to sell finished items made by you.
Patterns may not be copied, redistributed or resold.

SEWING INSTRUCTION

ATTACHING THE HARDWARE TO THE STRAP

I made my strap short so you can see the whole strap.



1. Take one end of the strap and thread it through the slider. Faux leather/cork side facing up.



2. Now thread it over the center bar of the slider buckle.



OR



3. Bring the end of the strap back about 2" (5 cm) from the bar of the slider. Pin and sew the short end to the strap by sewing a box with an X in it **OR** install rivets using manufactures instructions how to install.



4. Take the other end of the strap (empty end) and put on one swivel clasp hook, and pull the swivel clasp down close to the buckle, about 4" (10 cm) from the slider.



5. Take the other end of the strap (empty end) and put it through the slider again, and pull it down to the swivel clasp about 4" (10 cm)



6. Now you should have the box with the X in it or the rivets between the layers

© Sewn Ideas - You are welcome to sell finished items made by you.
Patterns may not be copied, redistributed or resold.

SEWING INSTRUCTION



7. Take the other end of the strap (empty end) and thread it through another swivel clasp



8. Pull the strap end back about 2" (5 cm) Pin and sew one more box with an X in it or install rivets.



9. This is how your finished strap should look like, just longer, or with rivets.

CONGRATS!

"YOU ARE DONE"

E-mail: vivi@sewnideas.com

Website: www.sewnideas.com

www.sewnideas.com



© Sewn Ideas - You are welcome to sell finished items made by you.
Patterns may not be copied, redistributed or resold.